



**LDV**



**G10**

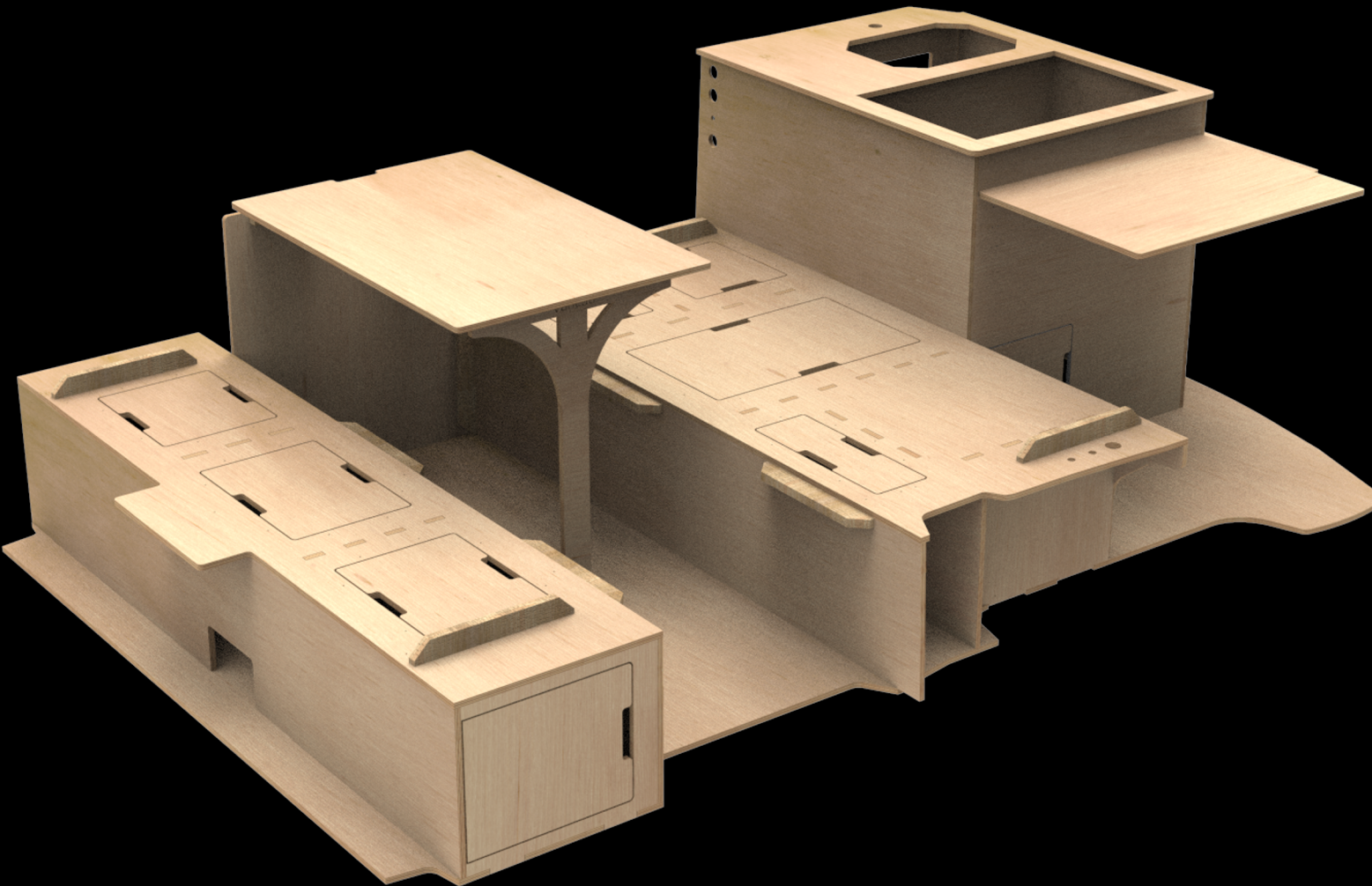
# VANLAB LDV G10: KITSET CONVERSION

## DESIGN

- Monocoque plywood panel campervan conversion kitset.
- 3D computer designed and manufactured
- Available in a Scandinavian pre-finished birch or a NZ unfinished pine
- Kit set or installation available

## LIVING SPACE/BED

- Double bench seating and table to serve 4 people
- Fold-down table to full sized double bed
  - Squabs made in three sections only
- High quality, high foam density squabs. 100mm thickness



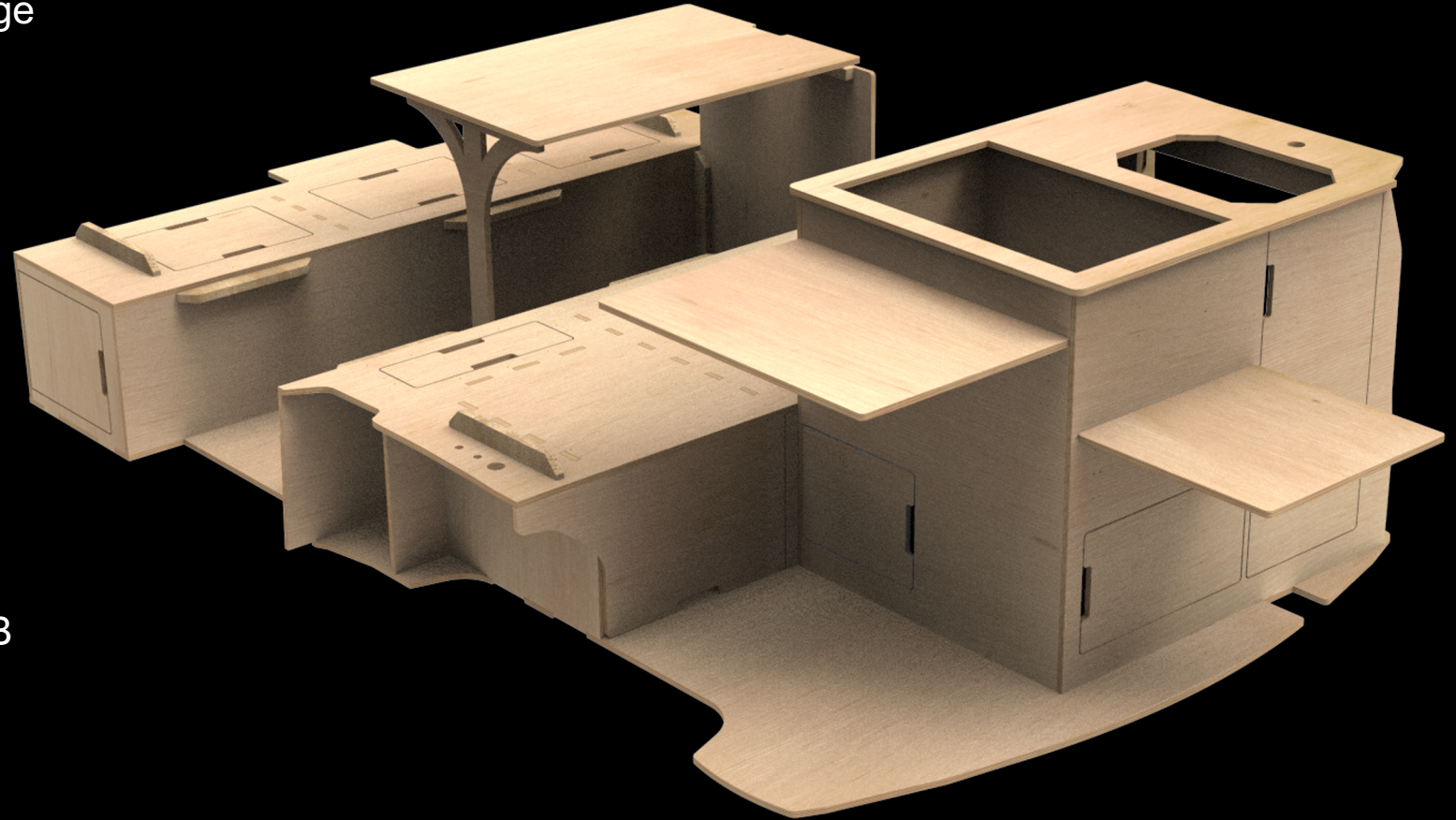
# VANLAB LDV G10: KITSET CONVERSION

- **KITCHEN**

- Kitchen unit size for 50L of water storage
  - 25L Fresh, 25L Grey Water
  - 15L Stainless steel sink
- Fold-out table at rear and side
  - “inside-outside” kitchen use.
- Fridge storage options up to 40L compressor fridge

- **Electrical**

- 100Ah or 120Ah deep cycle, AGM battery options
- Voltage Sensitive Relay (VSR) connection to start battery
- 3 x Light, 2 x voltmeter, 2 x double USB charger, fridge power socket
- 240V inverters available





# VANLAB LDV G10: KITSET CONVERSION

- **STORAGE:** 1053L of storage
- **SELF CONTAINMENT:** Self-contained for 2 people
- **VAN AND CONVERSION PACKAGES**
  - New van and conversion packages available
    - 1.9% finance promo currently available
  - **LDV G10: Starting at \$29,990 + GST & ORC**
    - [ldv.co.nz](http://ldv.co.nz)
  - **Woodwork Kitset only (Pine): \$2,250 (inc. gst)**
  - **Comprehensive Kitset: \$9,250 (inc. gst)**
    - Pre-finished Birch, Second battery system, plumbing, upholstery and self containment
  - **Comprehensive Installed: \$11,250 (inc. gst)**

